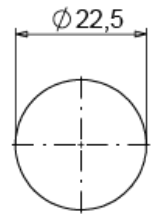


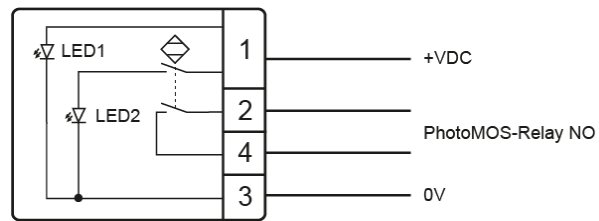
Drilling pattern



## Plug M12, 4-pin



## Connection diagram



## Technical specifications SC30 single channel

Operating voltage	≡ 24 V (19.2 to 28.8V)
Contact load	100 mA (70 mA at 167°F (75°C))
Output	PhotoMOS-Relay NO
Output pulse	Constant signal when actuated
LED 1	GreenLED
LED 2	YellowLED
Reverse polarity protection	Yes
Short circuit protection	Yes
Power consumption	Max. 20 mA at 24V
Operating temperature	-13°F to +167°F (-25°C to +75°C)
IP rating	Frontside IP68, Connector IP67
Type of actuation	Capacitive
Actuation force	No actuation force required
Rated insulation voltage	32V
Switch-off-delay	Max. 50 ms
Switch-on-delay	Max. 30 ms
MTTF <sub>d</sub>	100 years