



AUTOMATION. INNOVATION. RESULTS.

CIMTEC Delivers Innovative Automation Solutions that Provide
a Competitive Advantage in the Global Marketplace



A TRUSTED PARTNER TO MANUFACTURERS FOR ALL THEIR INDUSTRIAL AUTOMATION NEEDS



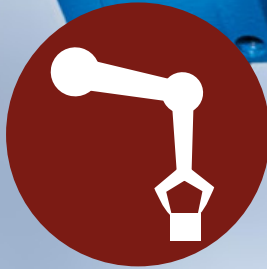
Since first establishing our business in 1987, CIMTEC has become one of the industry's largest, most progressive, responsive and trusted providers of automation solutions. Our work ranges from fully vetting and supplying automation products to designing and implementing complete, state-of-the-art automation systems. Headquartered in Charlotte, NC, CIMTEC has offices in strategic locations throughout North Carolina, South Carolina and Virginia.

Our staff offers wide-ranging expertise from engineering to repair to sales. We never stop studying the latest technology, including networking, open architecture, safety, and enterprise systems.

In our three decades of service, CIMTEC has accumulated an unparalleled track record of long-term relationships with high-quality manufacturers. Our customers stay with us because they've experience firsthand our technological prowess, our responsiveness, and our exceptional customized solutions.

We're dedicated to helping our customers succeed through technology, and to developing the best value, performance and innovation in our industry.

THE CIMTEC TEAM



AUTOMATION PRODUCTS

AUTOMATE YOUR ENTIRE PRODUCTION LINE



INNOVATIVE AUTOMATION SOLUTIONS

CIMTEC Automation is one of the industry's largest, most advanced and trusted automation products and engineering solutions provider for the automation industry.

Trained technicians offer wide-ranging expertise from engineering to repair to sales, and are experts in the latest technology, including networking, open architecture, safety, and enterprise systems.

CHOOSE FROM A COMPREHENSIVE PORTFOLIO OF AUTOMATION PRODUCTS

Automate your entire production line or choose an industrial automation system to enhance quality, speed up inspection, improve accuracy and decrease costs associated with labor, energy, and materials. CIMTEC's expert consultants will help you determine the best industrial automation pathway to suit your production and budgetary requirements.

CIMTEC selects from a comprehensive portfolio of fully vetted products. You can choose to move your facility into full automation all at once or step-by-step.

ROBOTICS



High-Speed Precision Industrial Robots, SCARA, Six-Axis & Cartesian Varieties



Collaborative Mobile Robots



Adaptive Robot Gripper, Plug + Play Vision for Universal Robots, Force Torque Sensors



End-of-Arm Tooling for Collaborative Robots



Autonomous Mobile Robot, Automate Transportation & Logistics



3D Discrete & Robotic Event Simulation Software



Flexible Part Feeding Solution



ProFeeder Modular Robot Cell Program



Industrial Robots and Robotic Automation Systems



Intended for those deploying automation in a production environment.

VISION AND SENSING



Robust Photo-Eyes, Safety Curtains & Scanners, RFID, Laser Measurement Sensors, Safety Controllers, 2D Bar Code Readers, Encoders



LED Illumination for Machine Vision



LED Illumination for Machine Vision



Ergonomic Support and Positioning Devices



Control, 3D Smart Sensors, Industrial PC's, Flat Panel Touch Screens



Laser Marking, Almost Every Type of Marking Application, Extremely Precise



Industrial Lighting, Light Towers, Stack Lights, Beacon & Warning Lights



Precision LED Lighting for Vision & Imaging



Digital imaging components, software, and sub-systems

CONTROLS



Control Systems
Proficy Industrial Software



Pneumatic and Electric actuation and control



AC & DC Drives, Servo Drivers, Motors



Industrial Ethernet



Operator Interface, Control, Specialty GE PLC Modules



Remanufactured Legacy Automation Components



Operator Interfaces



Flat Panel PCs & Monitors,



Flat Panel PCs & Monitors, Industrial PCs, Rugged Tablets



Industrial Networking, Computing, and Automation Solutions



Industrial Gateways for Remote Monitoring



Rugged Computing



ENGINEERED SOLUTIONS

IMPROVE EFFICIENCY WITH THE RIGHT AUTOMATION SYSTEM



ELIMINATE DEFECTS WHILE INCREASING OUTPUT

SICK is one of the top brands of industrial sensors in the world and is highly regarded as the non-contact sensor technology leader. Our **CIMTEC Engineered Products** division can help implement the right sensors into any automation control system optimizing the precision of SICK ultrasonic sensor products.

REALIZE INNOVATION WITH CIMTEC PRE-ENGINEERED SOLUTIONS

As the preferred automation experts for more than three decades, CIMTEC has developed and fine-tuned many advanced solutions, each designed to draw out peak performance from specific manufacturing systems and processes. The versatility of these pre-engineered solutions means that our engineers can easily adapt them to similar applications in other industries, saving development time and costs.

Our pre-engineered solutions offer innovative options that can reduce costs while improving quality and efficiency. By streamlining complex motion, vision and control capabilities the CIMTEC team can create a customized automation solution for your specific needs. We work with integrators and end-users alike.



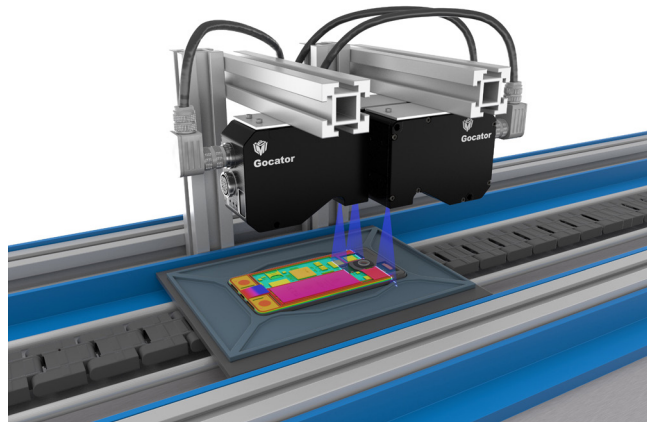
CIMTEC INCREASED OUR PACKAGING
PRECISION BY 70% VERSUS OUR
PREVIOUS GENERATION. AND THEIR
CREATIVITY ENABLED US TO MEET OUR
YEAR-END DEADLINE. WOW!

— **BIN LIN**, *Principal Engineer,*
Mondelez International



THE REDUCTION IN INSPECTION TIME
AND ELIMINATION OF FALSE REJECTS IS
IMPRESSIONS. YOUR HARD WORK TRULY
SHOWS WHAT KIND OF A COMPANY YOU
ARE AND THE DILIGENCE YOU HAVE WITH
YOUR PROJECTS.

— **CRAIG WALLACE**
Engineering Technician, Schaeffler



DEFINE, DESIGN, EXECUTE, DELIVER

We measure success by the results of our customers – **hundreds of companies are achieving or exceeding their manufacturing performance objectives with our help** - The spectrum of these success stories extends from companies with simple legacy automation systems to companies with some of the most complex, state-of-the-art automation technology. We design and deploy systems that make sense for you, and give you the best payback.



SERVICE, PARTS, & SUPPORT

FAST RESPONSE, TECHNICAL SUPPORT, EXPEDITED SHIPPING AND PREVENTATIVE MAINTENANCE

“

WE GREATLY APPRECIATE YOUR EXPERT GUIDANCE AND INSTRUCTIONS OVER THE PHONE TO RESTORE OUR UR ROBOT TO SERVICE YESTERDAY. YOU MADE A BIG DIFFERENCE IN GETTING OUR MANUFACTURING LINE BACK INTO OPERATIONS QUICKLY.

—MITCH STRICKLAND, *Engineering Supervisor, GSK*

GET PEAK PERFORMANCE WITH CIMTEC SERVICE

After 30 years of supporting the southeast's most demanding operations, we have learned what our customers need. Fast response, technical support, expedited shipping, and preventative maintenance, are just a few.

As an authorized GE and EPSON repair facility, you can trust that your machines are in good hands. And because we have so many parts on hand, we can ship the component you need on the day you order it, anywhere in the world.



ONE OF THE MOST COMPREHENSIVE SERVICE PROGRAMS IN THE INDUSTRY

CIMTEC has one of the most comprehensive service programs in the industry. Our customized programs are designed to your facilities specific needs: fast response, technical support, expedited shipping, and preventative maintenance, are just a few. See our entire offering on our website or request a brochure by calling **877-524-6832**.



EXPERT REPAIRS, QUALITY PARTS, 24/7 TECHNICAL SUPPORT

With over \$10m in inventory and a trusted customer service team, CIMTEC is the go-to provider of automation replacement parts, delivered quickly and as affordably as possible. **You have full access to our decades of experience and our expert engineers' know how 24/7**, which means, you have a reliable partner for the life of your automation system, and beyond.



Industrial
Automation & Control
Premier Distributor



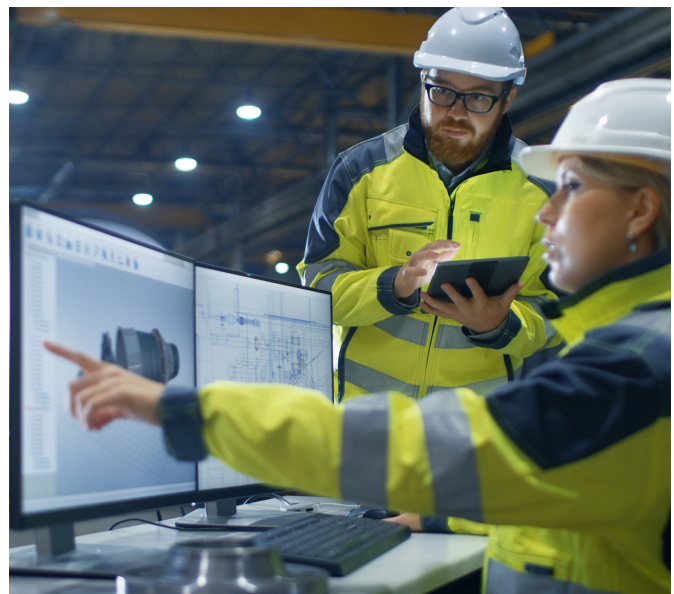
ALL THE RESOURCES YOU NEED AT YOUR FINGERTIPS

We've collected and conveniently organized critical information on our website. Select from the Frequently Asked Questions (FAQ), conversion programs, programming tools, manuals and other reference documents listed for each product family, or our team of specialists and engineers are just a phone call away, **877-524-6832**.



THE RISK ASSESSMENT PROGRAM BY CIMTEC WAS VERY BENEFICIAL AND HELPED US IDENTIFY SOME SURPLUS EQUIPMENT WE NO LONGER NEEDED. CIMTEC'S EFFORTS HELPED US OPTIMIZE OUR SPARE PARTS SUPPLY.

—SHANE LAMP, AJAX Rolled Ring





TRAINING & WORKSHOPS

TRAINING CLASSES AND WORKSHOPS TAUGHT BY
FACTORY TRAINED ENGINEERS

CIMTEC
MINDS OVER MACHINES

20 Person Limit
Register by April 17th

**FREE VIRTUAL PRO-FACE
GP-PRO EX TRAINING COURSE**

Pro-face

The advertisement features a background image of two men in a factory setting looking at a computer monitor. The monitor displays a complex industrial control interface with various gauges, graphs, and data points. The CIMTEC logo is in the top left, and the Pro-face logo is in the bottom right.

FREE WORKSHOPS

Our free workshops are taught by factory-trained engineers with years of experience in the subject matter and are designed to enhance your knowledge and productivity. In most workshops participants work at lab stations for a hands-on experience with the product and live demonstrations, log-in for virtual software training or go to an outside location for an afternoon of technology and fun.

TRAINING CLASSES AND WORKSHOPS LED BY FACTORY TRAINED ENGINEERS

The automation industry is constantly evolving and producing more efficient, higher quality and cost effective equipment that is difficult to keep up with. Learning how to run these machines on your own can be a daunting task, one that most facilities don't have the resources or the time to do on their own. We started our training classes and workshops because we realized that selling our world class products was not enough, we needed to help our customers learn to use them.

CIMTEC OFFICE LOCATIONS

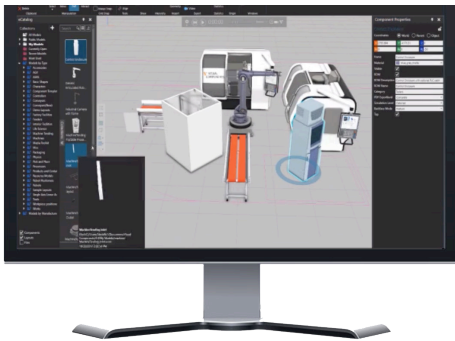
Every month we have workshops that cover robots, vision and sensing, and GE PLC training in one of our CIMTEC office locations:

- Charlotte NC - Headquarters
- Greenville, SC
- Raleigh, NC
- Richmond, VA

WE OFFER ROBOTIC, VISION, GE PLC AND SOFTWARE TRAINING CLASSES:

- Cognex Vision Training
- SICK Spreadsheet & Vision Training
- GE Automation and Control Training (PLC)
- Epson Training & Workshops
- Lensing & Lighting Symposiums
- MiR Training & Workshops
- UR Training & Workshops
- Visual Component Training

Go to our website and view the schedule for all of our classes and workshops at cimtecautomation.com



SOFTWARE APPLICATION AND GE/EMERSON CONTROLS TRAINING (PLC)

Train your personnel, test components and debug software application programs without taking systems out of production. Our classroom simulators are available to meet your training, development and maintenance requirements.

Our world-class controls training for maintenance, operations, and engineering personnel has classes for beginner and advanced engineers. You will interact and network with peers while enjoying focused access to an expert instructor.

ROBOTIC AND VISION CLASSES

As part of its mission to make the advantages of collaborative robotics and Vision technology widely accessible, CIMTEC's Robotics training classes will teach core programming skills to cobot users regardless of their robotics experience or backgrounds.

Our **Vision training classes can help you optimize your manufacturing process and increase organizational expertise.** Whether its basic or advanced training you need, we have classes for learning the fundamentals or the advanced technologies of machine vision.





3915 Shopton Rd., Suite 103 | Charlotte, NC 28217
Phone (877) 524-6832 | cimtecautomation.com